

TTT KB1067 NAT Traversal

Recommended configuration:

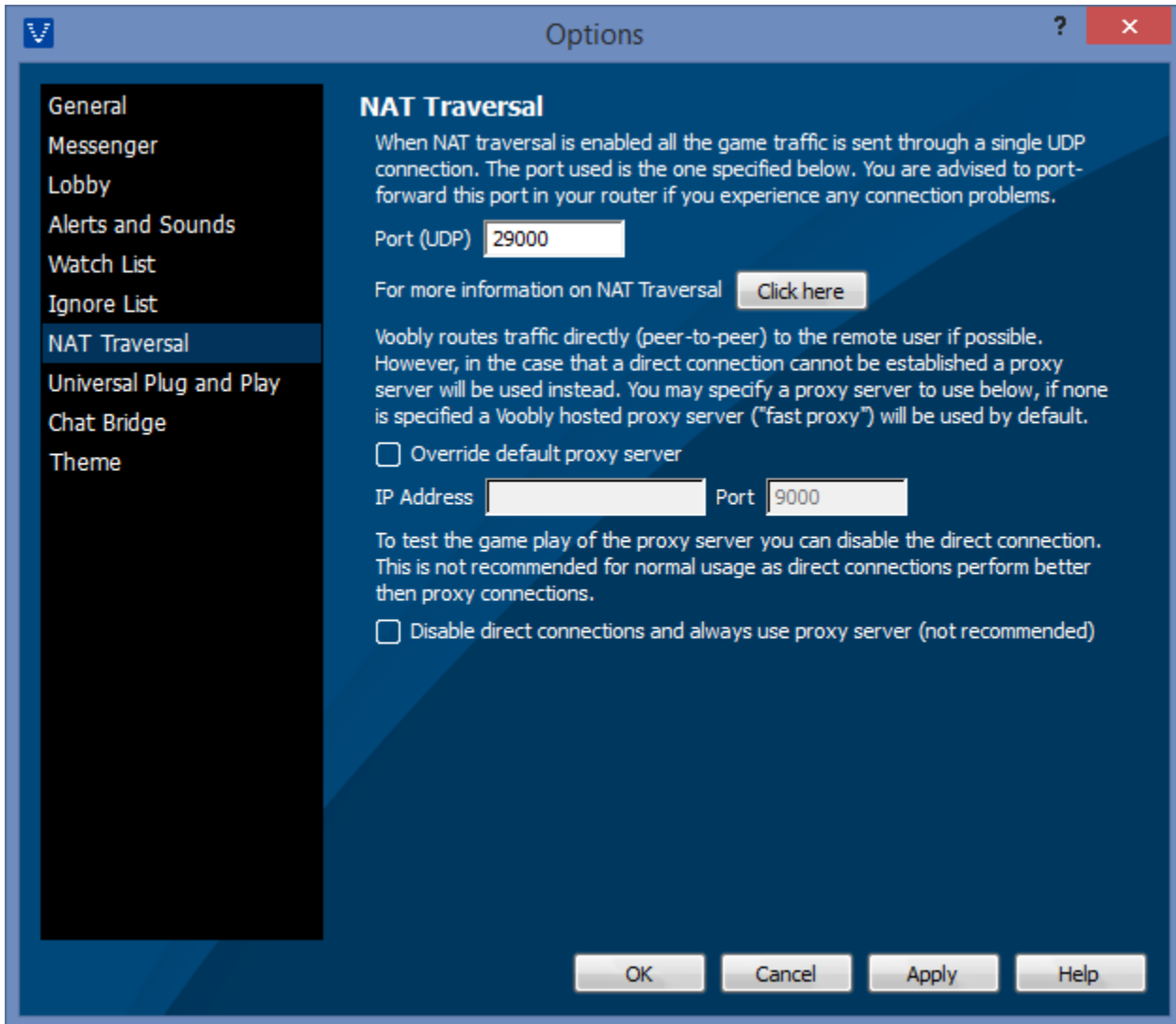
- Override default proxy server: **DISABLED**
- Disable direct connections and always use proxy server (not recommended): **DISABLED**

Default: **ALL DISABLED**

Recommended NAT-Traversal port: **27000 UDP** or **29000 UDP**

Default NAT-Traversal port: **16000 UDP**

i Port 16000 UDP is a common port used by other applications. Under certain circumstances this could be causing problems. We recommend changing this to one of the values above.



Artículos relacionados

- [TTT KB1012 Required outgoing firewall configuration for Voobly](#)
- [TTT KB1067 NAT Traversal](#)
- [TTT KB1066 Universal Plug and Play](#)
- [TTT KB1057 Advanced Multi-Mon Features](#)
- [TTT KB1065 Run in Windows XP SP2 compatibility mode](#)